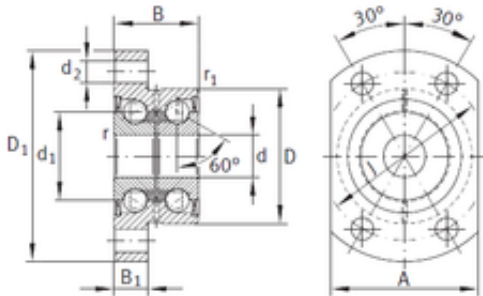




# NTA PRECISION AXLE CORP.

6 mm x 24 mm x 15 mm INA ZKLFA0640-2Z  
angular contact ball bearings



Bearing No. ZKLFA0640-2Z

|                               |            |
|-------------------------------|------------|
| Size                          | 6x24x15 mm |
| Bore Diameter                 | 6 mm       |
| Outer Diameter                | 24 mm      |
| Width                         | 15 mm      |
| d                             | 6 mm       |
| D                             | 24 mm      |
| B                             | 15 mm      |
| C                             | 15 mm      |
| Screw                         | M4         |
| Angle (?)                     | 60 °       |
| d1                            | 14 mm      |
| d2                            | 4,5 mm     |
| r min.                        | 0,3 mm     |
| r1 min.                       | 0,6 mm     |
| A                             | 27 mm      |
| B2                            | 6 mm       |
| D1                            | 40 mm      |
| J                             | 32 mm      |
| da min.                       | 9 mm       |
| da max                        | 18 mm      |
| Weight                        | 0,08 Kg    |
| Dynamic load rating axial (C) | 6,9 kN     |
| Static load rating axial (C0) | 8,5 kN     |

ZKLFA0640-2Z Bearing 2D drawings and 3D CAD models